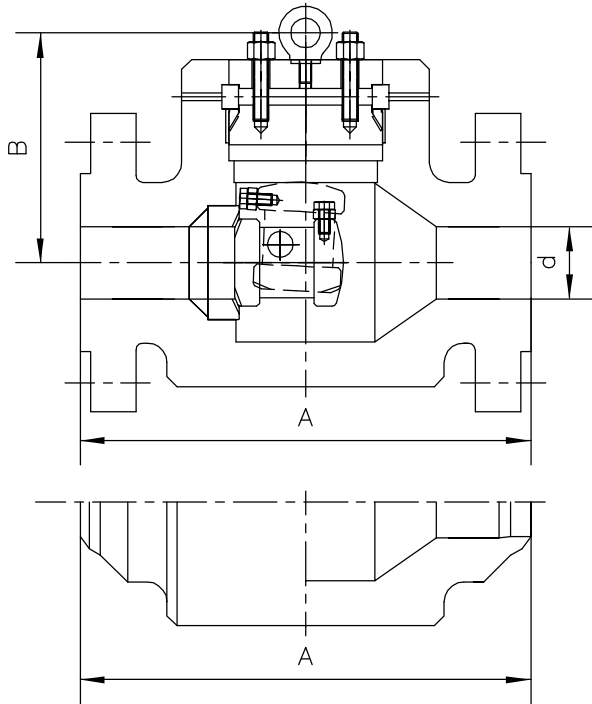


TILTING DISC CHECK VALVES—CLASS 1500~ 2500#

Size range: 2" to 20"



STANDARDS:	
Design	ANSI B16.34&BS 1868
Test	API 598
Face to Face Dimensions	ANSI B16.10
End Flange Dimensions	ANSI B16.5
Butt-Weld Ends	ANSI B16.25

Class 1500# FIG 71500 PS-TL
DIMENSIONS AND WEIGHTS

Size inch	d	A (RF/BW)	B	Weight (Kg)(BW)
2"	47	216	140	35
3"	70	305	158	60
4"	92	406	191	120
6"	136	559	247	135
8"	178	711	305	242
10"	222	864	360	450
12"	263	991	423	720
14"	289	1067	480	1100
16"	330	1194	540	1450
18"	371	1537	598	1905
20"	416	1664	657	2418

Class 2500# FIG 72500 PS-TL
DIMENSIONS AND WEIGHTS

Size inch	d	A (RF/BW)	B	Weight (Kg)(BW)
2"	38	279	162	45
3"	57	368	184	68
4"	73	457	220	145
6"	111	610	283	177
8"	146	762	353	400
10"	184	914	417	740
12"	219	1041	489	1170
14"	241	1118	566	1650
16"	276	1245	670	2200

Other Sizes: On request BW: Butt Weld

AVAILABLE OPTIONS:

STRUCTURE	End, Connection: Flange Raised Face, Butt Weld, RTJ...
	Seat Rings: Threaded (Renewable), Welded
MATERIALS	Body: WCB, WC1, WC6, WC9, LCB, LCC, LC3, C5, C12, CF8, CF8M, CF3, CF3M, CF8C...
	Trims: 13%Cr, 304, 304L, 316, 316L, 321, 347, F-51, Monel...